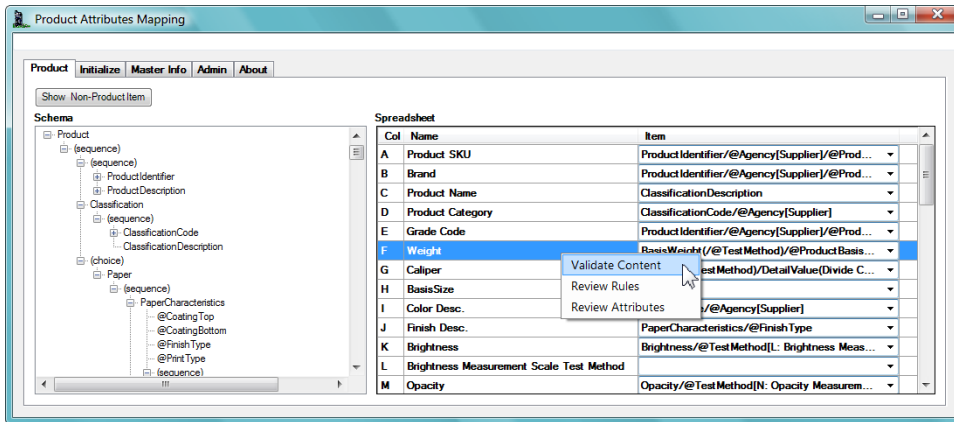


The Drybridge Accelerator[®]

Create *papiNet* Product Attributes XML from Microsoft Excel 2003/2007

The Drybridge Accelerator[®] simplifies and automates the process of creating a *papiNet* Product Attributes XML document from a Microsoft Excel 2003/2007 spreadsheet.

- Use an existing spreadsheet of information
- User-friendly drag-and-drop approach
- Produce *papiNet* compliant XML documents
- Maps can be exported and imported
- Microsoft Excel add-in



Accelerator Mapping Window: Showing a completed map

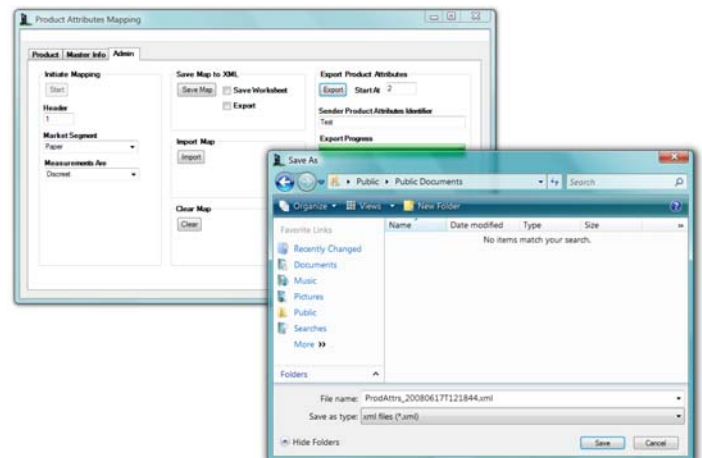
Communicating your product characteristics is an ideal scenario for using a spreadsheet to create a *papiNet* XML document. Product characteristics are easily managed in a spreadsheet. A spreadsheet may even be the primary vehicle that you use to manage your product lines. Providing a valid *papiNet* Product Attributes XML document to your trading partners allows them to integrate your product information into their selection process while retaining the user-friendly Excel

format. Basing the Product Attributes XML document on the Excel spreadsheet serves to ensure that there is consistency between the human readable and machine readable formats. The validation and mapping process also will serve to ensure that you provide consistent and complete information in the spreadsheet as you will be creating rules that translate your spreadsheet columns to *papiNet* attributes and elements.

Once you create the map The Drybridge Accelerator[®] can be used:

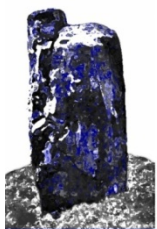
- to validate the content in the spreadsheet
- to create a ProductAttributes XML document
- to export the map for reuse by others

These functional benefits permit you to modify the information in the original spreadsheet or to regenerate the spreadsheet and apply the previously created map. The import process even recognizes when you have changed the type of information stored in a column and provides an import issues resolution process.



This is Version 1.0 of the Drybridge Accelerator. This version and all future versions are free for use.

Create the map, the Drybridge Accelerator[®] does the rest



Drybridge Consulting

Drybridge Consulting
Arthur Colman, President
4 Drybridge Road
Medway, MA 02053 USA
colman@drybridge.com
www.drybridge.com
Phone: 617.803.2546